



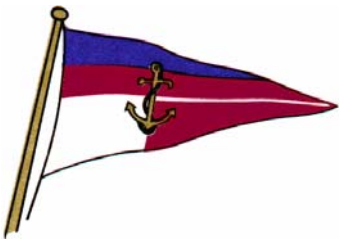
EAGLE HARBOUR YACHT CLUB

**The Perfect Location
For Your Next Special Event**



5750 Eagle Harbour Road, West Vancouver, British Columbia, V7W 1P5
Telephone: 921-7636 Fax: 921-7631
www.ehyc.org





EAGLE HARBOUR YACHT CLUB Clubhouse Rental Information

5750 Eagle Harbour Road, West Vancouver British Columbia V7W 1P5
604 921-7636

All rates are subject to change. Applicable taxes not included

Last updated: April 14, 2008

Corporate Rentals

4 hours \$250

Additional hour \$35/hr

1 day (9 hours) \$400

Evening 6 hours \$300

Full day and evening \$500

If falling on Tuesday or Wednesday, or if the event will occur in the evening add \$150 staffing charge

Cleaning \$80

Refundable Damage deposit \$300

Social Rentals

Full day and evening \$2000

Day (9 hours) \$630

Any 6 hours \$280

Cleaning of \$175 applies for all events

Any event that occurs or continues past 6pm incurs a staff charge of \$150

Refundable Damage deposit \$1000 required for Social Rentals.

Notes:

1. The Clubhouse may only be booked by a member in good standing, or in the case of a corporate rental, on the recommendation of a member in good standing.
2. Payment required – 50% of rental due on booking, balance due 1 month before rental, refundable damage deposit (if a sponsored event) required one month before booking.
3. Socan - Society of Composers, Authors and Music Publishers of Canada - tariff No 8. The Club is required to collect the designated fee for events that provide music (live band or DJ).
 - a. Functions without dance \$ 28.75 + 5% GST
 - b. Functions with dance \$ 57.55 + 5 % GST
4. Corporate Rentals are limited to a maximum of 50 participants. If the number of participants attending will exceed 50 or if alcohol will be served then the rental will be treated as a Social Rental. An application may be made to the Vice Commodore to waive this requirement.
5. The time required for setup for all rentals, including but not limited to; decorations, flower arrangements, table setting etc. is included in the rental hours. If additional time is required prevailing rates will apply. In the case of a Social Rental, application may be made to the Vice Commodore to waive this additional charge depending on the Clubhouse availability.
6. Use of the club oven and dishwasher is included in the rental.
7. Members may use the club cutlery, table clothes, plates and other items, but must ensure all items are returned clean and properly stored immediately after the event.
8. Where alcohol will be served, a valid Special Occasion License must be presented at least 14 days before the event. The person who obtains the Special Occasion License must be present at all times during the Social Rental.
9. In the case of a Social Rental, the renting member must be present at all times, and is responsible for all aspects of the rental.
10. For Social Rentals, it is the responsibility of the club member to be present in order to show the facilities to caterers, florists, members of the wedding party etc. It is not the responsibility of club employees to do so.

Common Questions (and Answers)

Do I need to be a Member in order to have a function? – Yes.

How many people may be seated for a dinner? – 110 for a formal dinner

Parking? – During the summer months we can assure 10 parking spaces. The summer is our members' busiest time of the year, and parking is at a premium. Parking is readily available on the streets surrounding EHYC. Please look carefully for no-parking areas.

Will decorative seat covers fit on the chairs? – No

Can we rent chairs and use instead of the club chairs? – Yes

How many chairs will fit on the deck if the service is wanted outside? – 40-50 depending on the arrangement.

How do I obtain a Liquor License? – You need to take a course specified by the BC government, or have a person with their accreditation obtain the license for you, and be present at the function.

Can we use the Stereo? – No

Do you have Patio heaters? – Yes, 1 only

How long may an event run into the evening? – Music off at 11pm, building cleaned and vacated by 12 am.

May we smoke? – All EHYC is designated as non-smoking.

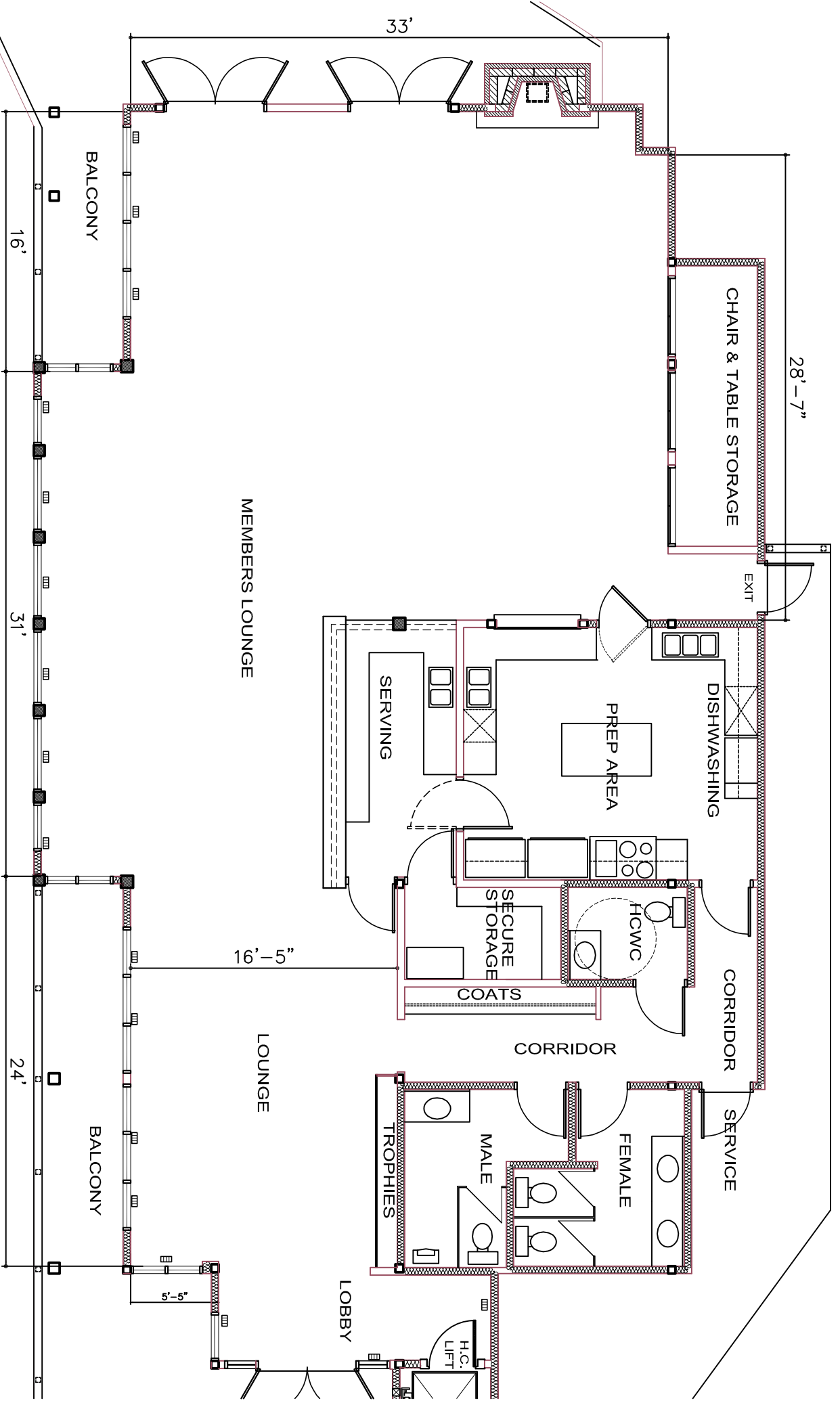
Can we remove Club pictures, burgees etc.? – No

Can we get married on the breakwater? – No

Can we get married on the beach? – The beach is not on the property of EHYC. You would need to contact The District of West Vancouver 604-925-7000

Can we take chairs to the beach? – No

Who do we contact during the event if we need assistance? – Club Superintendent who will provide his contact information at the event.



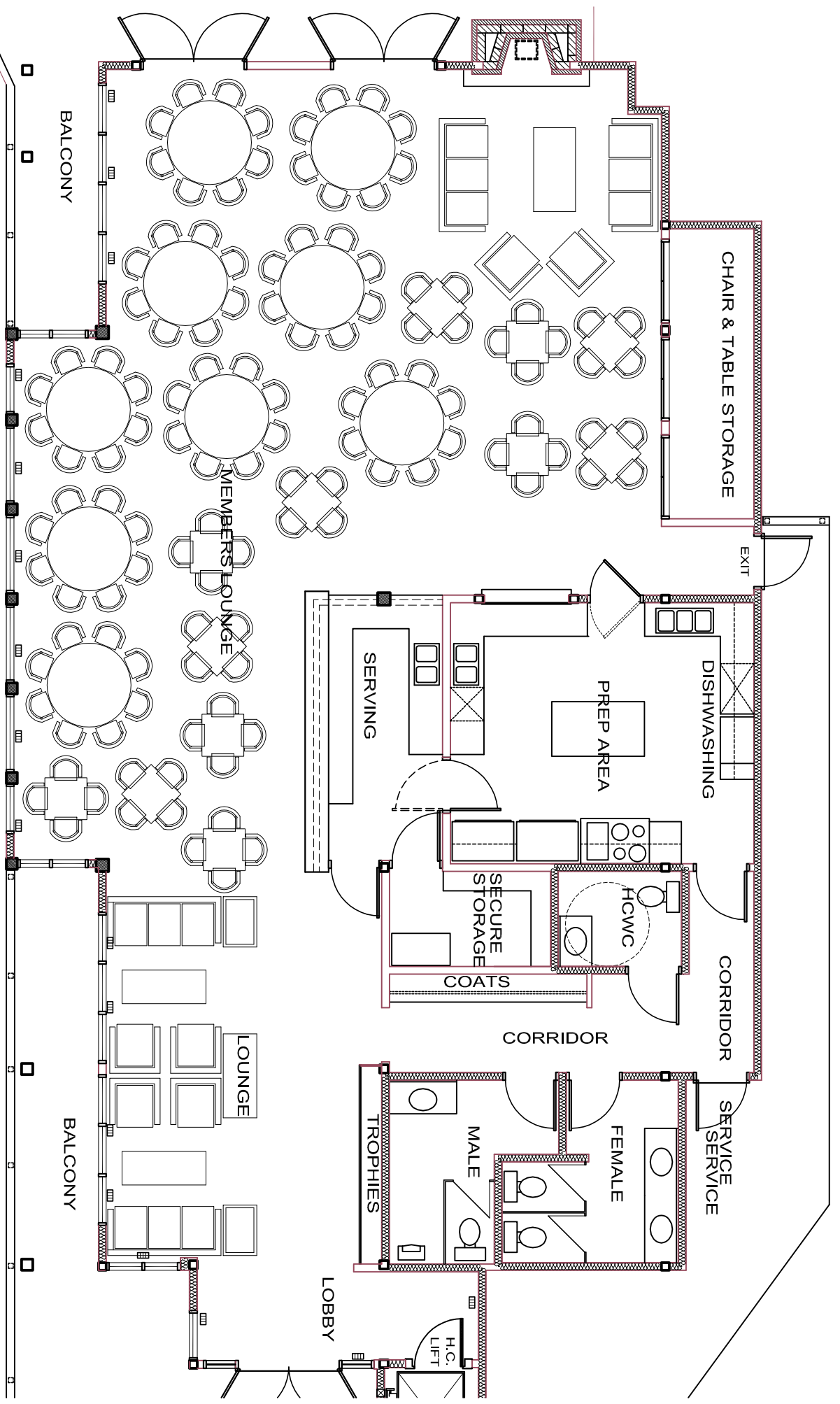
FURNITURE LIST

- 9 - 60 INCH DIAMETER TABLES
- 12 - 30 INCH SQUARE TABLES
- 4 - 5 FOOT x 30 INCH FOLDING TABLES
- 70 'BLUE' CHAIRS
- 50 'BROWN' CHAIRS

- 4 CHESTERFIELDS
- 8 BUCKET CHAIRS
- 1 LARGE COFFEE TABLE
- 1 MEDIUM COFFEE TABLE
- 2 SMALL OBLONG TABLES
- 2 SQUARE LAMP TABLES

Eagle Harbour Yacht Club

KWIBR ARCHITECTS PLANNERS INC

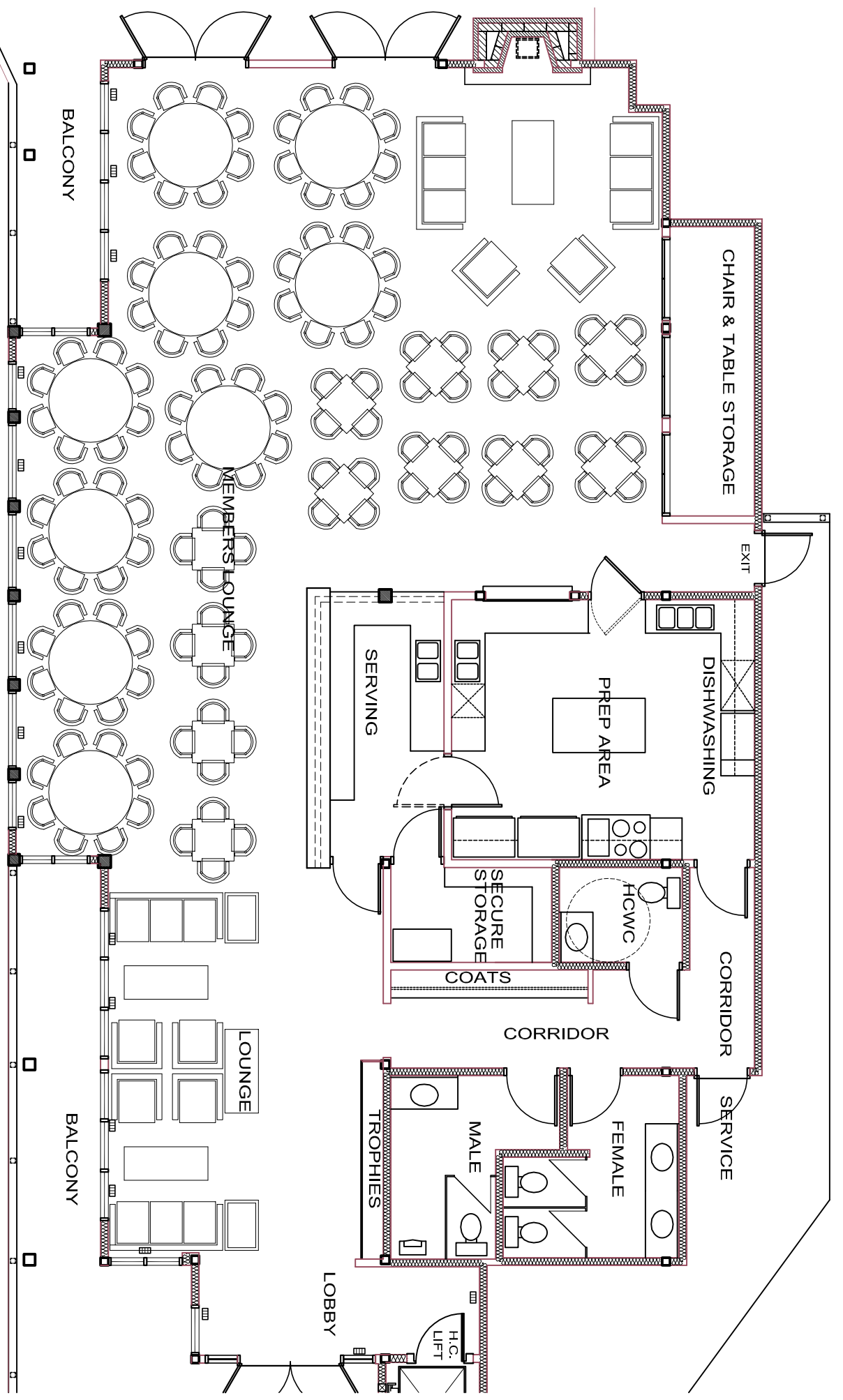


SEATING LAYOUT #1

72 persons on 9 - 60" diameter tables
 48 persons on 12 - 30" square tables

120

Eagle Harbour Yacht Club



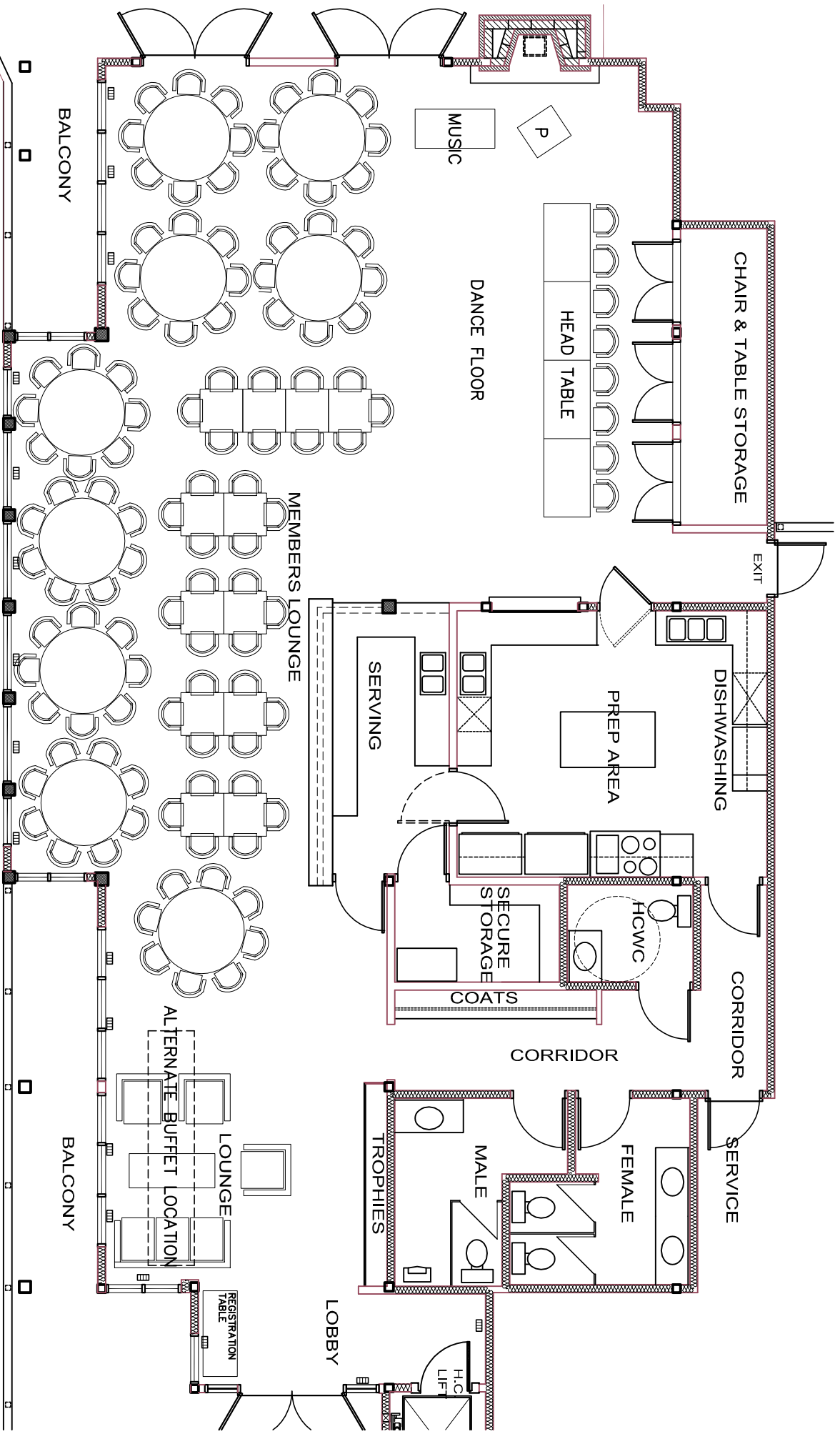
SEATING LAYOUT #2

72 persons on 9 - 60" diameter tables

48 persons on 12 - 30" square tables

120

Eagle Harbour Yacht Club



SEATING LAYOUT #3

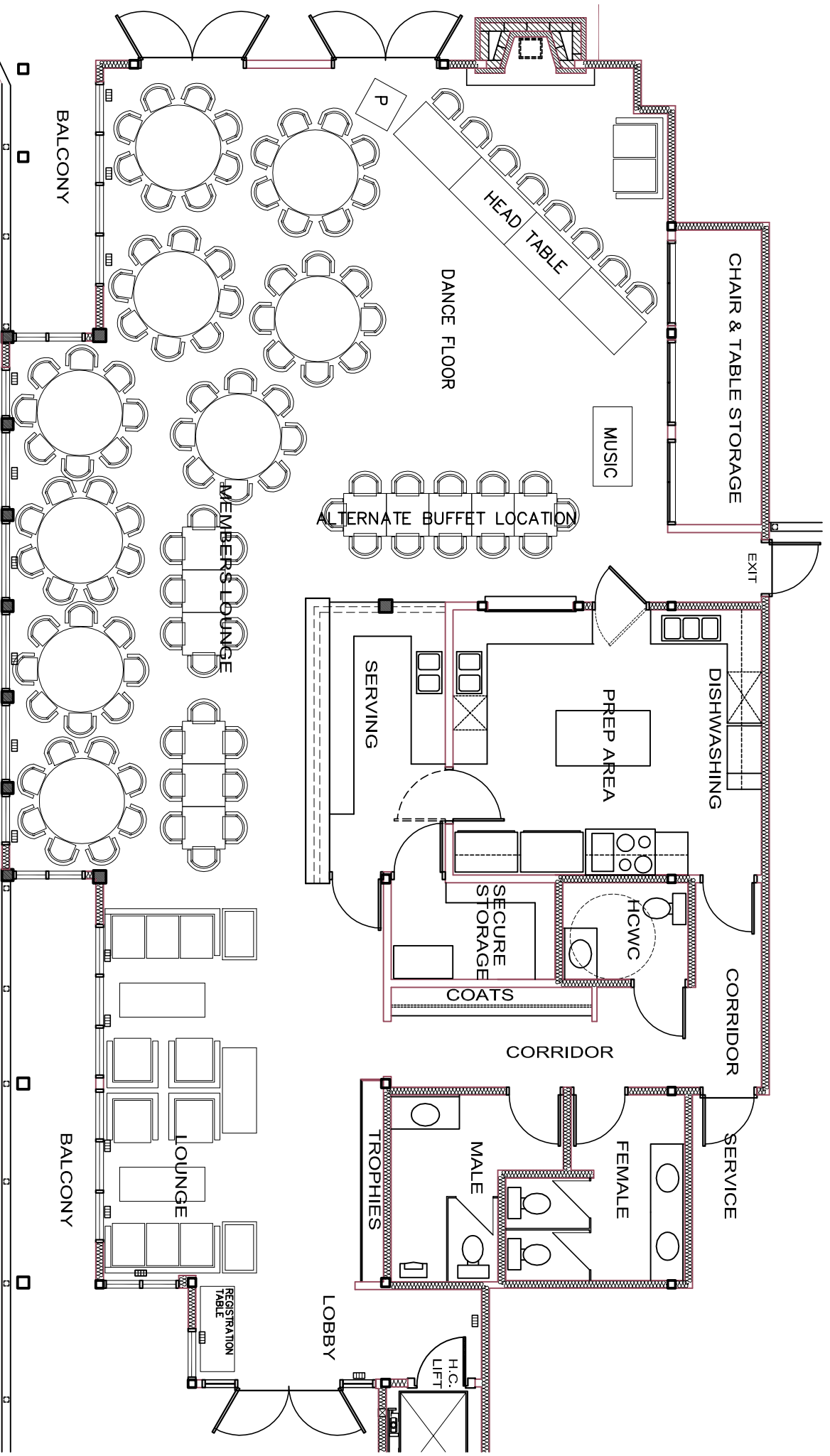
72 persons on 9 - 60" diameter tables

34 persons on 12 - 30" square tables

106 + 8 at HEAD TABLE = 114

Eagle Harbour Yacht Club

KIMBR ARCHITECTS PLANNERS INC



SEATING LAYOUT #4

72 persons on 9 - 60" diameter tables

28 persons on 12 - 30" square tables

100 + 8 at HEAD TABLE = 108

Eagle Harbour Yacht Club